

# FOR SALE

## 5, CHERRY LANE FARM

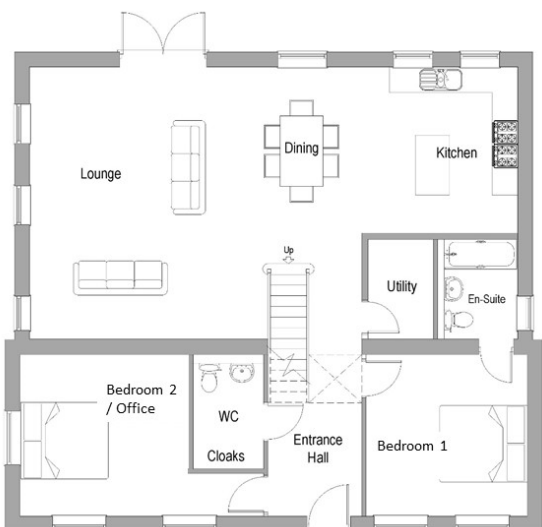
### FOUR BEDROOM DETACHED BARN STYLE HOME

5, Cherry Lane Farm, Cherry Lane, Rode Heath, Cheshire, ST7 3QX

# £475,000

**Our exclusive new development** of 6 three & four bedroom homes currently under construction, is nestled amongst the rolling green fields of the Cheshire countryside and brings a mix of natural traditional aspects with contemporary living.

**5, Cherry Lane Farm** is one of the first plots to be released for sale offering a beautiful two storey barn style property at ~1800 sq ft. The layout has been designed to provide a flexible living arrangement with bedroom space on both floors, perfect for those wanting the optional benefit of bungalow style living. The first floor provides 2 large bedrooms with a generous bathroom while on the ground floor there are 2 further double bedrooms, one en-suite with bath and shower while the fourth bedroom having access to the downstairs WC is flexible to be used also as a additional living space. Planned to be ready for occupation in August 2020, there is a fantastic opportunity to purchase off plan giving you the flexibility to apply bespoke elements to your home.



Proposed Ground Floor



Proposed First Floor

#### This spacious home will be finished to a high specification:

- Contemporary kitchen with appliances
- Laufen and Hansgrohe bathroom suites
- Porcelanosa bathroom and floor tiles
- LPG gas fired central heating & underfloor heating downstairs
- CAT5 cabling to each room
- Master bedroom with en-suite bath and shower
- 2 additional double bedrooms on the first floor with a spacious bathroom
- Guest room or additional living space with WC
- Private landscape gardens with a stone patio and walkways
- 10-year New Homes Warranty with ICW